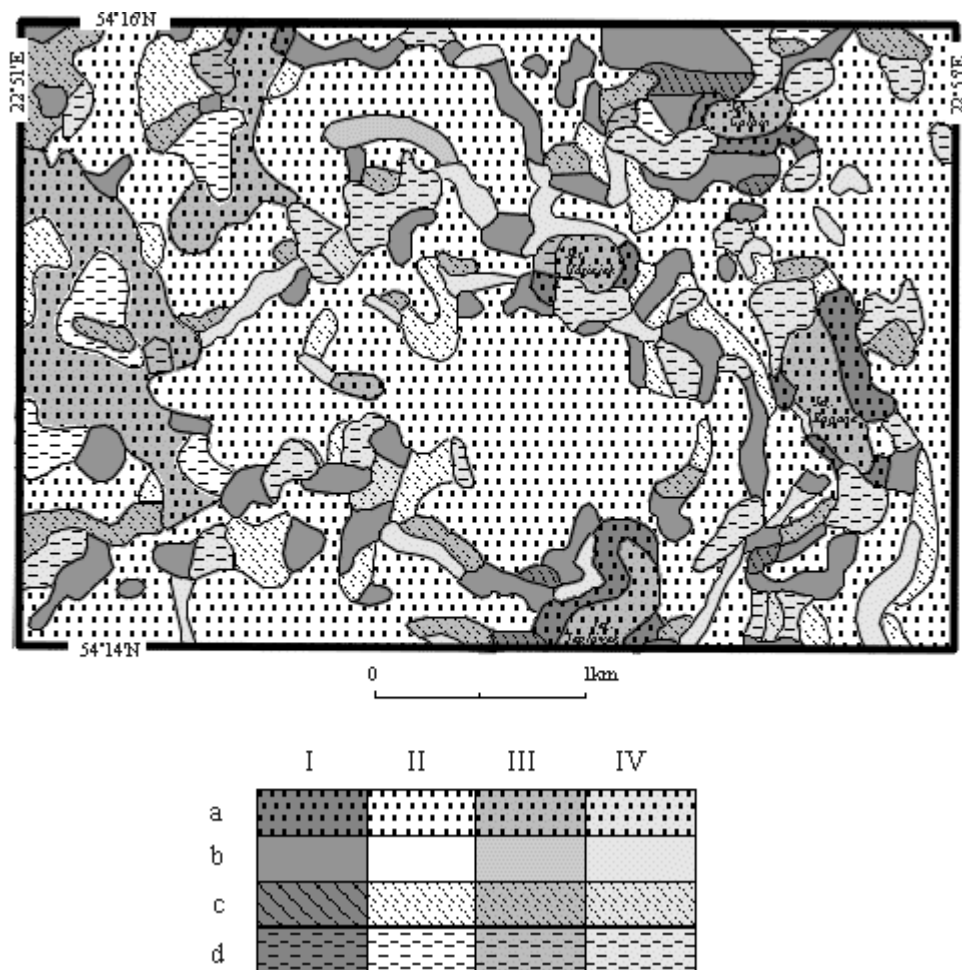


# Examples of biotopoclimatic maps



**Biotopoclimatic map of Suwalski Landscape Park (north-eastern Poland)**

I.a. - evaporative-reflexive	I.b. - evaporative-insolative	I.c. - evaporative-diffusive	I.d. - evaporative-variable
II.a. - convective-reflexive	II.b. - convective-insolative	II.c. - convective-diffusive	II.d. - convective-variable
III.a. - radiative-reflexive	III.b. - radiative-insolative	III.c. - radiative-diffusive	III.d. - radiative-variable
IV.a. - mixed-reflexive	IV.b. - mixed-insolative	IV.c. - mixed-diffusive	IV.d. - mixed-variable



**Biotopoclimatic map of Ciechocinek health resort (central Poland)**

1.2. - evaporative-insolative, with great air pollution (0001),
1.3. - evaporative-dyffusive, classes: with trees produced aerosol (1000) and with trees produced aerosol + air pollution (1001),
1.4. - evaporative mixed, with great air pollution (0001),
2.1. - convective-reflective, classes: with radiative fogs (0010) and without any specific features of the atmosphere (0000),
2.2. - convective-insolative, without any specific features of the atmosphere (0000),
3.3. - radiative-diffusive, classes: with trees produced aerosol (1000) and with trees produced aerosol + radiative fogs (1010),
4.2. - fluctuated-insolative, classes with great air pollution (0001), with trees produced aerosol (1000) and with sea aerosolu (0100)
4.3. - fluctuated-diffusive, without any specific features of the atmosphere (0000).